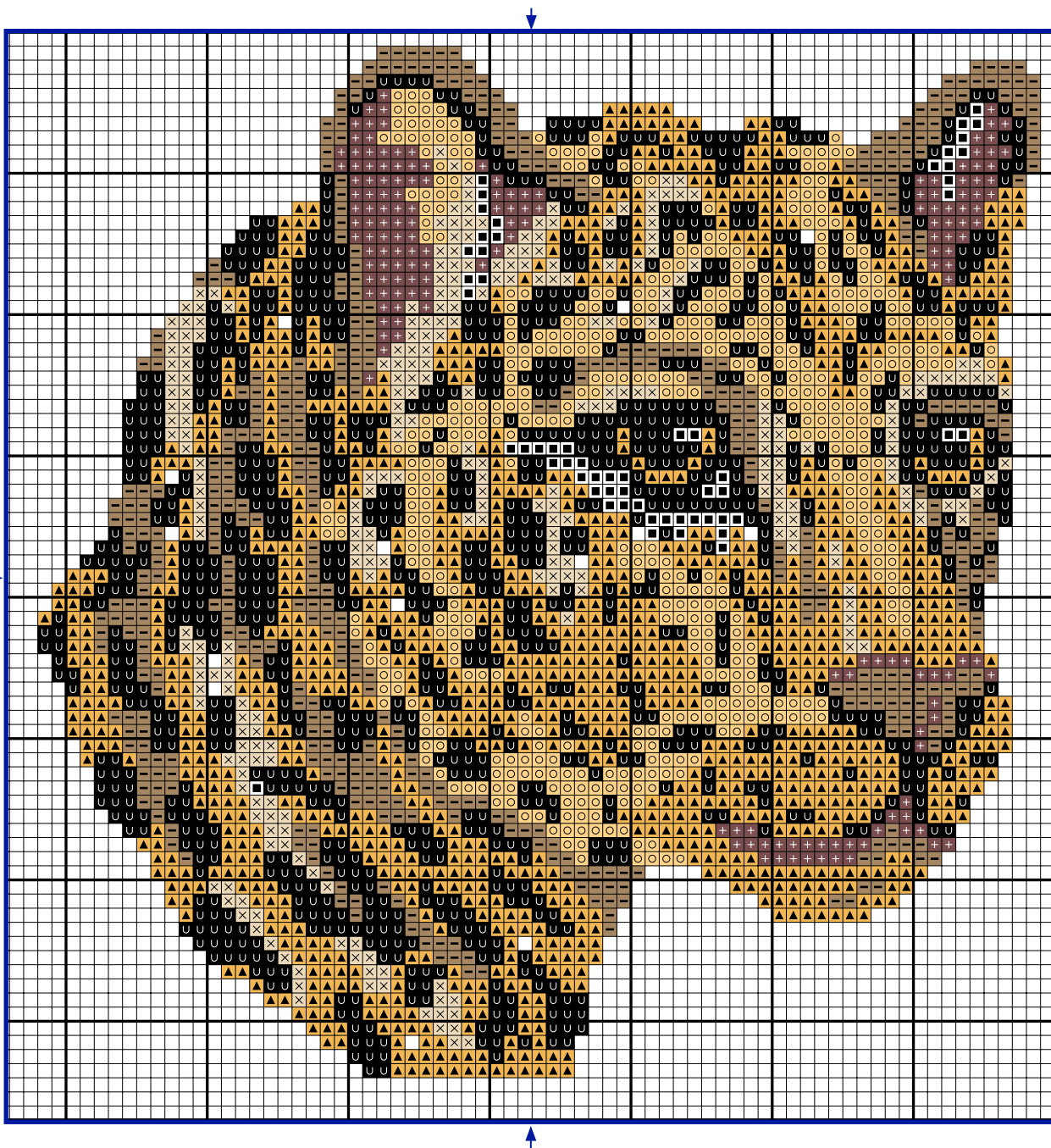


LEOPARD LÉOPARD

COLOURED CROSS STITCH CHART
DIAGRAMME PONT DE CROIX EN COULEURS

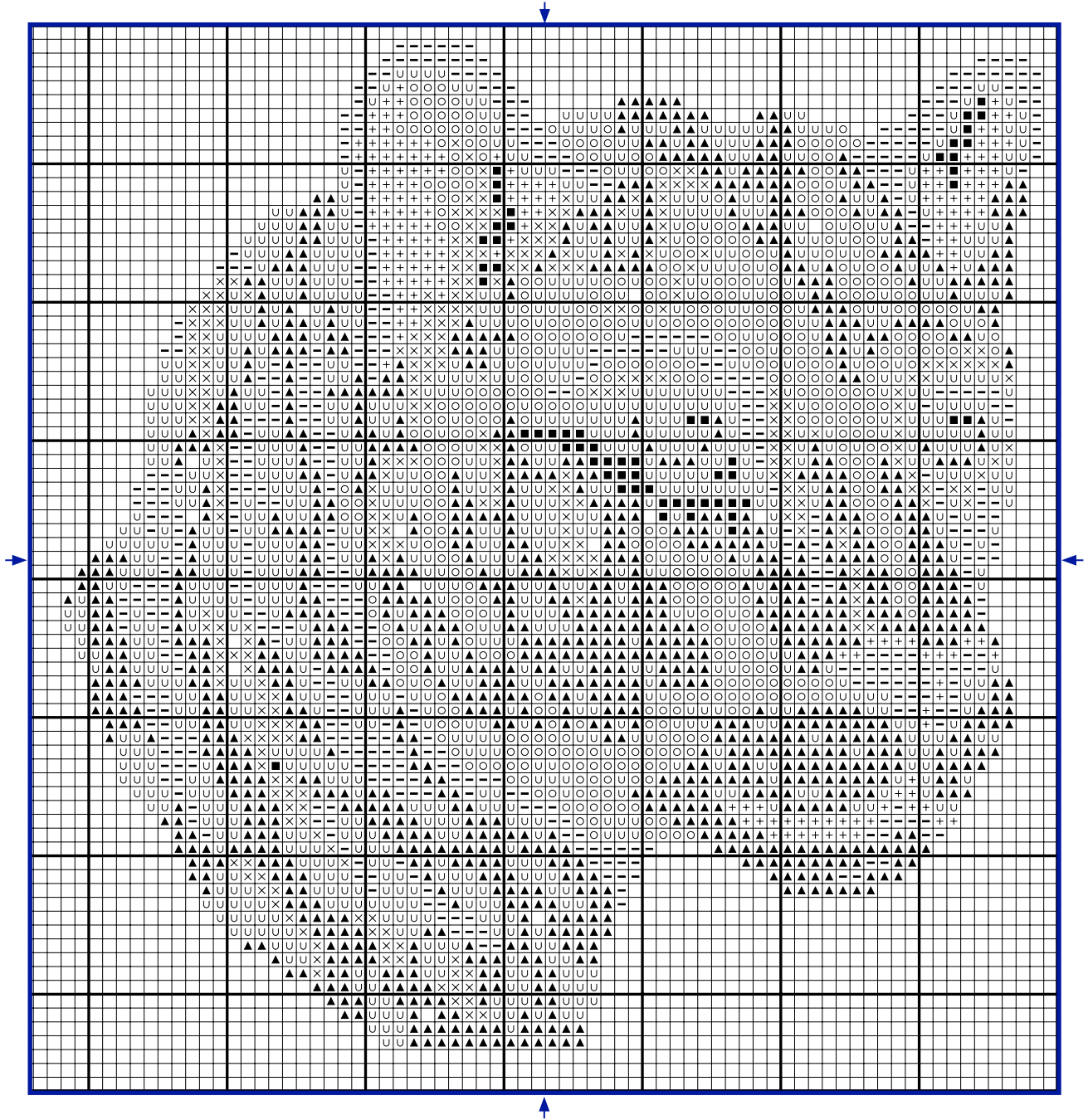


© 2019 / ALL RIGHTS RESERVED WORLDWIDE

DMC LIBRARY - BIBLIOTHÈQUE DMC

LEOPARD LÉOPARD

CROSS STITCH CHART - DIAGRAMME PONT DE CROIX



© 2019 / ALL RIGHTS RESERVED WORLDWIDE

DMC LIBRARY - BIBLIOTHÈQUE DMC

LEOPARD LÉOPARD

GETTING STARTED - COMMENCER

TOOL KIT / FOURNITURES

DMC DIAMANT EMBROIDERY THREAD ART. 380 / FILS DIAMANT DMC
CROSS STITCH FABRIC / AIDA / TOILE AIDA
CROSS STITCH NEEDLE / AIGUILLE
EMBROIDERY HOOP (OPTIONAL) / TAMBOUR (OPTIONNEL)
SCISSORS / CISEAUX

DESIGN SIZE / DIMENSIONS DESSIN
17 X 17 CM / 6,69 X 6,69 ”

THE SIZE OF YOUR DESIGN DEPENDS ON THE CROSS STITCH FABRIC YOU CHOOSE. THE HIGHER THE FABRIC'S "COUNT" (IE NUMBER OF CROSS STITCHES PER INCH), THE SMALLER THE STITCHES AND THEREFORE YOUR DESIGN. WE RECOMMEND BEGINNERS START WITH 14 COUNT AIDA (THE MOST COMMON CROSS STITCH FABRIC), WHICH IS WHAT WE HAVE BASED OUR DESIGN SIZE ON.

LA TAILLE DE VOTRE DESSIN DÉPEND DE LA TOILE POINT DE CROIX QUE VOUS CHOISISSEZ.

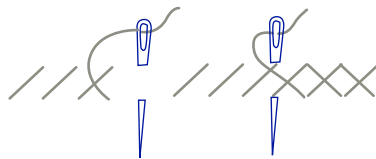
PLUS LE NOMBRE DE POINT DE CROIX PAR CENTIMÈTRE EST ÉLEVÉ, PLUS LES POINTS ET LA BRODERIE SERONT PETITS. NOUS RECOMMANDONS AUX DÉBUTANTS DE COMMENCER EN UTILISANT UNE TOILE AIDA 5,5 PTS/CM (LA TOILE DE POINT DE CROIX LA PLUS UTILISÉE), SUR LAQUELLE NOUS AVONS BASÉ NOTRE DESSIN.

LEOPARD LÉOPARD

GETTING STARTED - COMMENCER




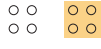



STITCHES AND COLOURS YOU'LL USE LÉGENDE : POINTS ET COULEURS

CROSS STITCH POINT DE CROIX



DIAMANT EMBROIDERY THREAD / FILS DIAMANT

SYMBOL COLOUR N° SKEINS*
SYMBOLE COULEUR N° D'ÉCHEVETTES*

	D5200	x1
	D168	x1
	D140	x1
	D3821	x1
	D3852	x1
	D898	x1
	D310	x1

* Based on stitching with the number of strands shown above, onto 14 count Aida. / * Basé sur le nombre de brins préconisé au-dessus, sur une toile Aida 5,5 pts/cm.